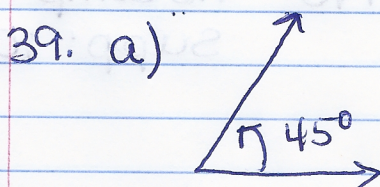
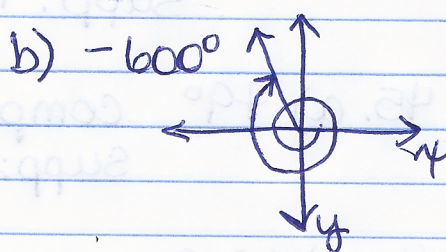
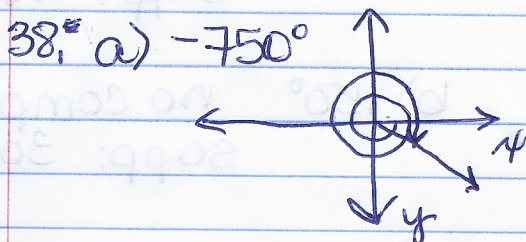
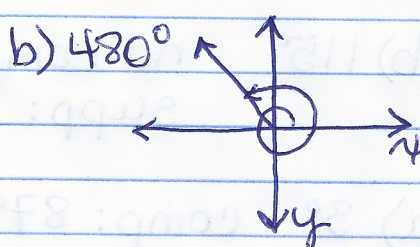
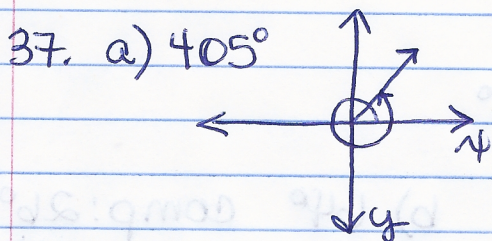
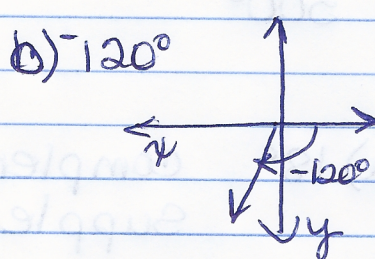
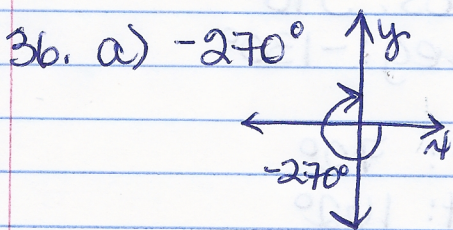
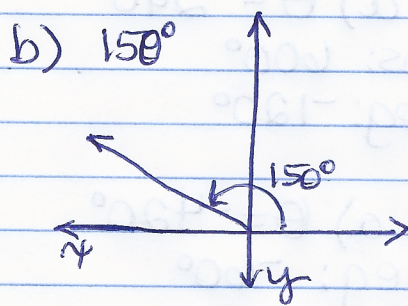
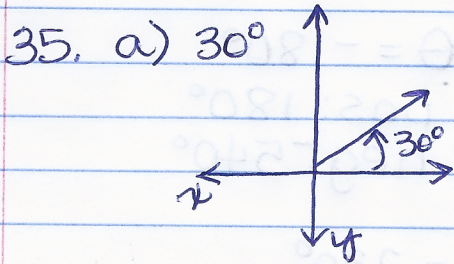


Adv. Hmwk p. 291 #31-46 all

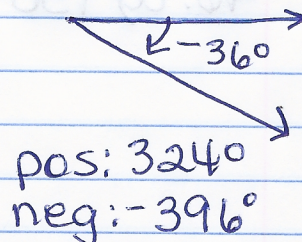
4.1 Angles in Coordinate Plane (Degrees)

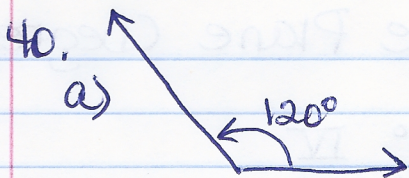
31. a) $130^\circ \rightarrow \text{II}$ b) $285^\circ \rightarrow \text{IV}$
32. a) $8.3^\circ \rightarrow \text{I}$ b) $257^\circ 30' \rightarrow \text{III}$
33. a) $-137^\circ 50' \rightarrow \text{III}$ b) $-336^\circ \rightarrow \text{I}$
34. a) $-260^\circ \rightarrow \text{II}$ b) $-3.4^\circ \rightarrow \text{IV}$



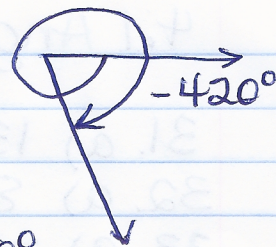
pos: 405°
neg: -315°

b)





pos: 480°
neg: -240°



pos: 300°
neg: -60°

41. a) $\theta = 240^\circ$

pos: 600°
neg: -120°

b) $\theta = -180^\circ$

pos: 180°
neg: -540°

42. a) $\theta = -420^\circ$

neg: -60°
pos: 300°

b) $\theta = 230^\circ$

pos: 590°
neg: -130°

43. a) 18° complement: 72°
Supplement: 162°

b) 115° no comp.
supp: 65°

44. a) 3° comp: 87°
Supp: 177°

b) 64° comp: 26°
Supp: 116°

45. a) 79° comp: 11°
Supp: 101°

b) 150° no comp.
Supp: 30°

46. a) 130° no comp.
Supp: 50°

b) 170° no comp.
Supp: 10°